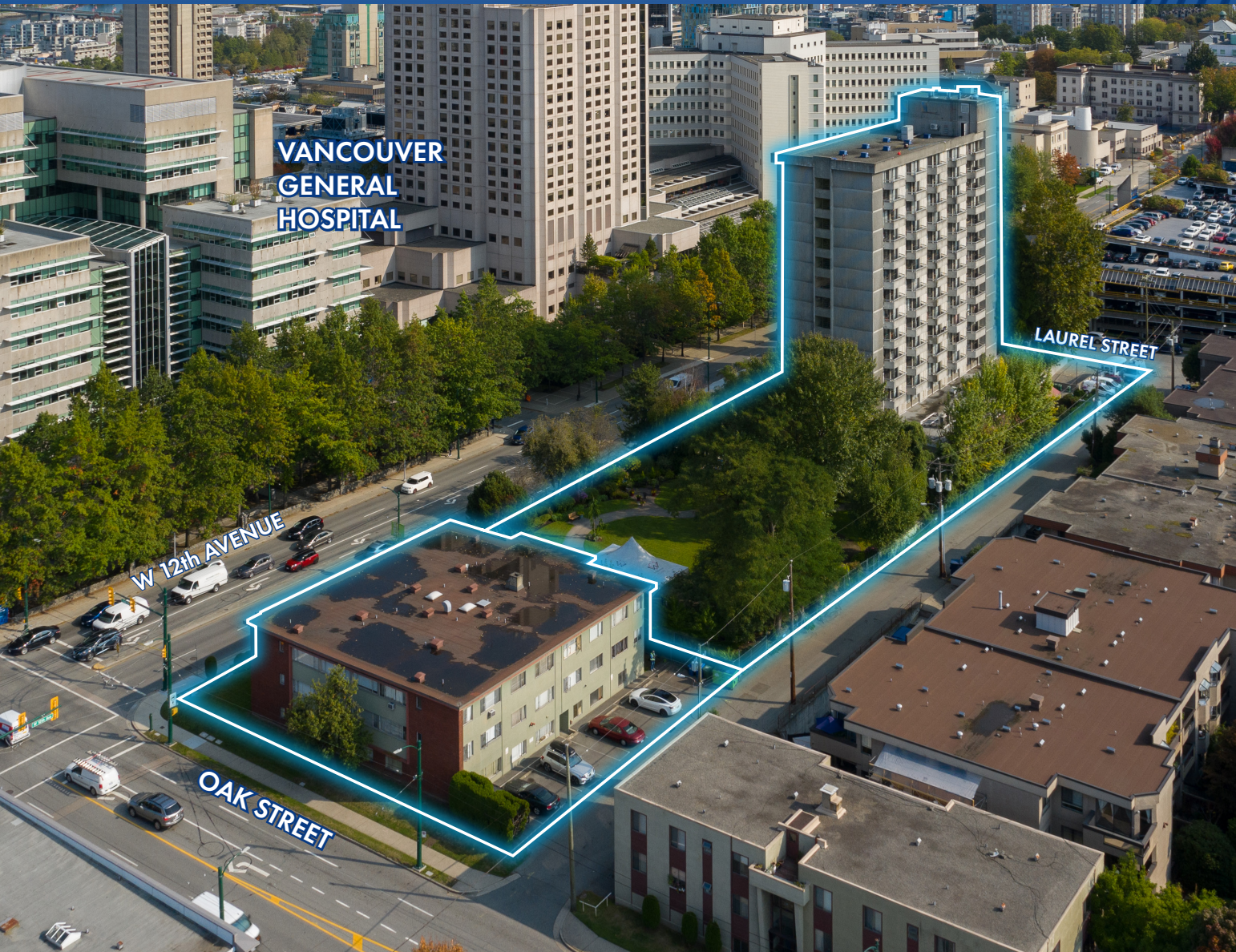


FRASER · ELLIOTT
COMMERCIAL

900-990 West 12th Ave,
Vancouver, BC

For Sale



62,430 SF
High Density
Redevelopment
Site Adjacent to
Vancouver General
Hospital

604.728.2845

sales@fraserelliott.com

www.fraserelliott.com

SALIENT FACTS

Address

900-990 W 12th Ave, Vancouver, BC

Site Area

62,430 Sq.Ft. Combined Total Sq.Ft.

Current Zoning

CD-1 295 & RM-3

Improvements

14 Storey Senior Care Facility / 3 Storey Multi Family Building

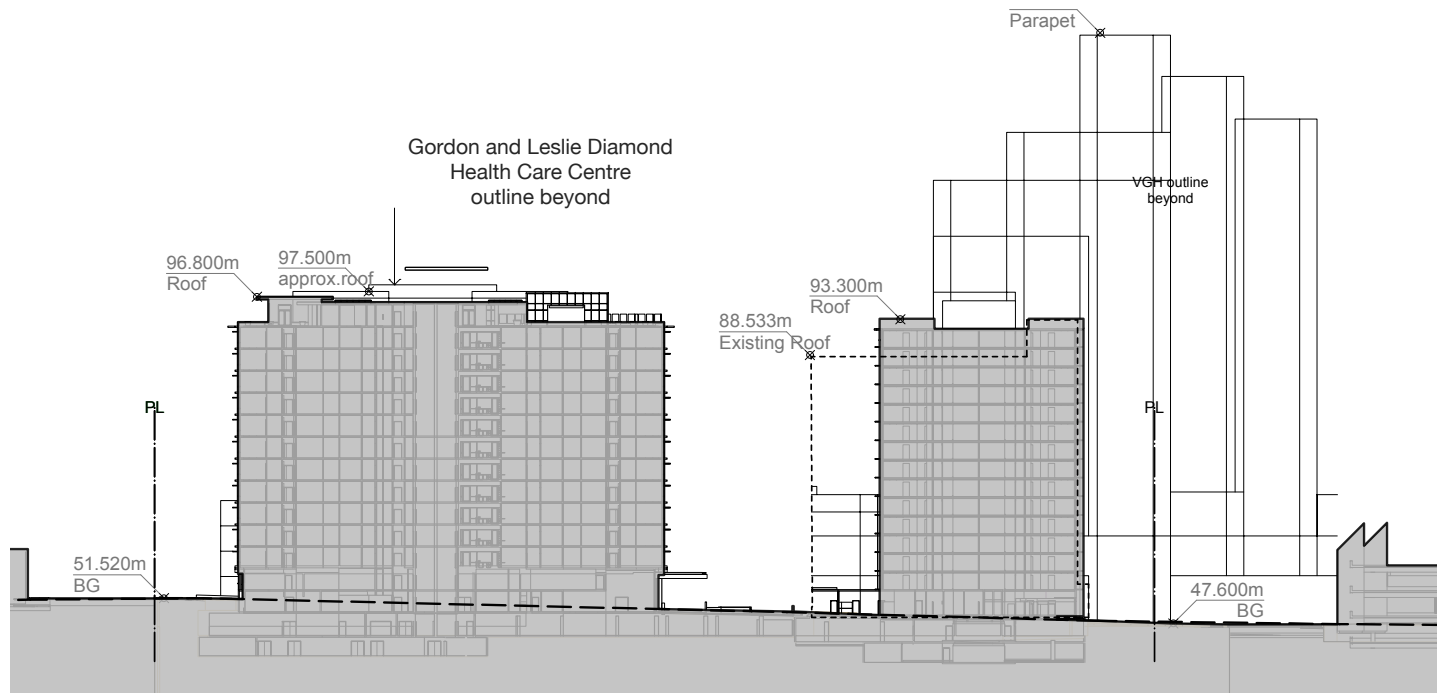
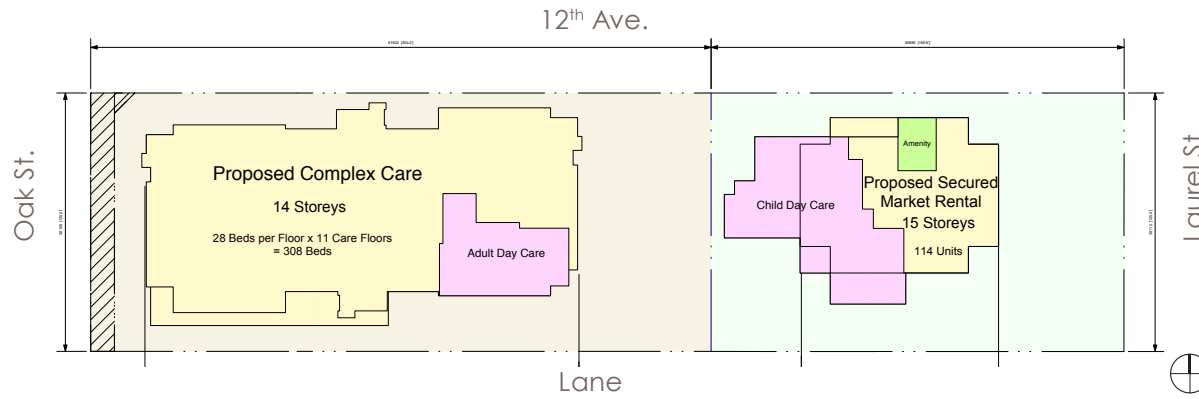
OPPORTUNITY

Outstanding Fairview redevelopment opportunity located within the Broadway Corridor Focus Area. Strategically located adjacent to Vancouver General Hospital, the subject site is a total of 62,430 square feet with 500' of frontage spanning from Oak to Laurel Street. The site is currently improved with the Windermere Care Centre (990 W 12th), which is a 14 storey 200+ bed senior care facility. On the west side of the property (900 W 12th), there is a 26 unit multi-family rental building. Excellent redevelopment potential to rezone, subdivide and obtain higher density.

Inquire For Pricing



PROPOSED SITE CONSOLIDATION, RE-SUBDIVISION & REZONING



Oak Street

Proposed Complex Care

Proposed Secured Market Rental Housing

Laurel Street

FRASER · ELLIOTT
COMMERCIAL

PROPOSED REDEVELOPMENT SOUTHEAST ELEVATION AT LANE



FRASER · ELLIOTT
COMMERCIAL

NORTH ELEVATION - W 12TH AVE. LOOKING WEST



FRASER · ELLIOTT
COMMERCIAL



604.728.2845

sales@fraserelliott.com

© 2022 The Firm Real Estate Services Ltd. All rights reserved.
E. & O.E.: The information contained herein was obtained from sources that we deem reliable and, while thought to be correct, is not guaranteed by The Firm Real Estate Services Ltd. and/or; Fraser Elliott Real Estate Group.

FRASER · ELLIOTT
COMMERCIAL